



watch



automobile



aerospace



medical



industry

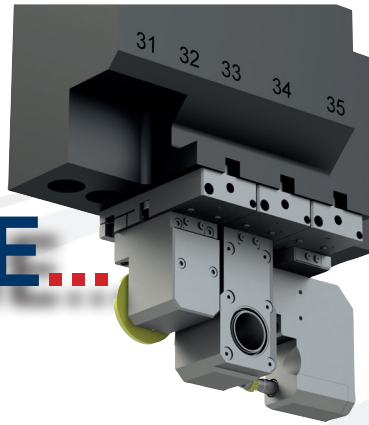


MODULAR SYSTEM FOR STAR MICRONICS.



Made in Switzerland
since 1969

MAKE YOUR MACHINE... MORE PRODUCTIVE



The base of the tool stays on the machine and you change a whirling tool to a gear hobbing tool within minutes. This quick-change system guarantees a faster turnaround time with the same quality and stability as you know from high-precision standard tools.

Use the same tool on different machines and save money!

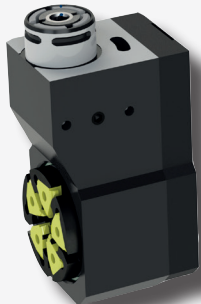
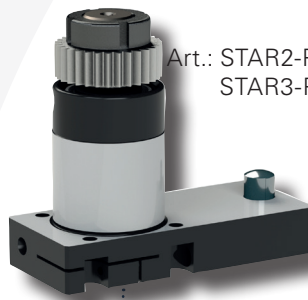
Machine SW12-R11

Art.: STAR1-PCR

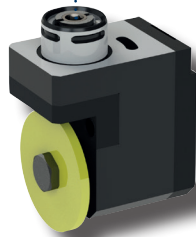


Machine SR20J
Machine SB12/20RG
Machine SW20

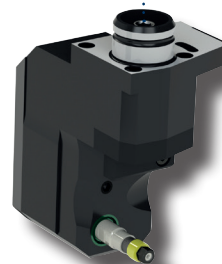
Art.: STAR2-PCR
STAR3-PCR



Whirling Head



Polygone Head



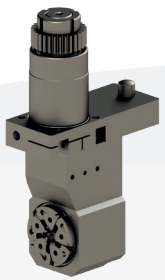
Gear Hobbing Head



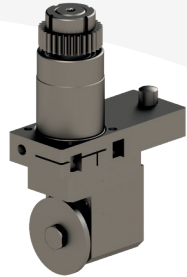
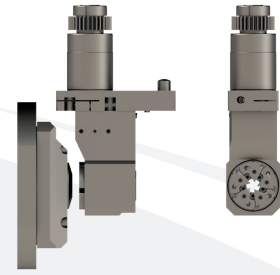
Ratio 1 : 1

- 1 Tool for different machines
- One tool holder needs ONLY one tool location
- No loss of quality on the spindle
- No loss of rigidity on the spindle
- Scale on the holder for precise adjustment of the angles
- Gear box of the machine is always protected against dirt

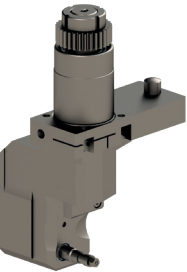
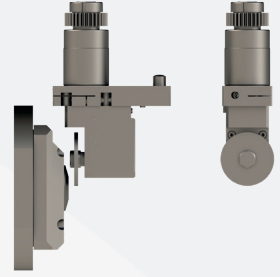
Closer to the guide bush



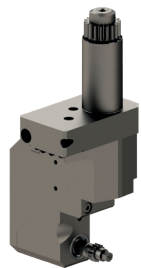
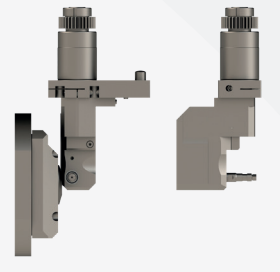
Function	Thread-Whirling
Tooling head	GSW-210
Works on	SR-20J / SB12/20-RG / SW-12RII
Location	T3400-3500 / T33-34-35 / T700
Cutting tool size	Passing Ø : 6mm x 4mm
	Nbr of cutters : 5
Distance tool axis - cutting line	5mm / 5mm / 4mm
Possible inclination of head	+/- 10°



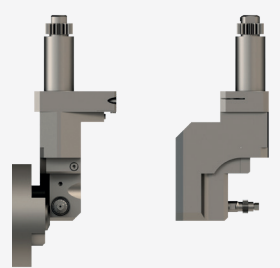
Function	Polygon maker
Tooling head	GSP-218
Works on	SR-20J / SB12/20-RG / SW-12RII
Location	T3400-3500 / T33-34-35 / T700
Cutting tool size	Internal Ø : 8mm x 3mm to 5mm
	External Ø : 40 to 45mm
Distance tool axis - cutting line	4mm / 4mm / 3mm
Possible inclination of head	+/- 10°



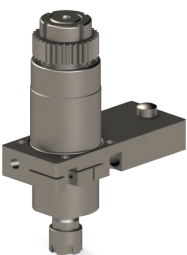
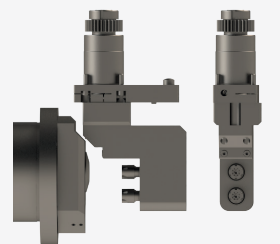
Function	Gear hobbing
Tooling head	GSH-145
Works on	SR-20J / SB12/20-RG
Location	T3400-3500 / T33-34-35
Cutting tool size	Internal Ø : 3.5 / 4.5mm x 3mm to 6mm
	External Ø : 6 to 10mm
Distance tool axis - cutting line	6.5mm / 6.5mm
Possible inclination of head	+3°...-15°



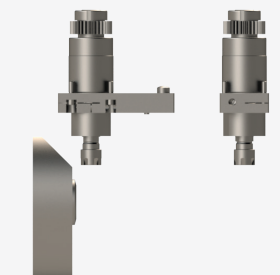
Function	Gear hobbing
Tooling head	GSH-045
Works on	SW-12RII
Location	T800-900
Cutting tool size	Internal Ø : 3.5 / 4.5mm x 3mm to 6mm
	External Ø : 6 to 10mm
Distance tool axis - cutting line	6.5mm
Possible inclination of head	+3°...-15°



Function	Axial Toolholder
Tooling head	GSE208
Works on	SR20J / SB-R
Location	T800-900
Cutting tool size	2x ER08
Distance tool axis - cutting line	26mm
Possible inclination of head	+3°...-15°



Function	Radial Toolholder
Tooling head	GSC007
Works on	SR20J / SB-R / SW12-RII
Location	T3400-3500 / T33-34-35 / T700-900
Cutting tool size	ER11
Distance tool axis - cutting line	11 / 11 / 10-5.5
Possible inclination of head	0°



Visit us online:
www.pcm.ch



PCM Willen SA

Route du Grammont 101
1844 Villeneuve
Switzerland

Tél. +41 (0)21 967 33 66
Fax: +41 (0)21 960 38 95